

English

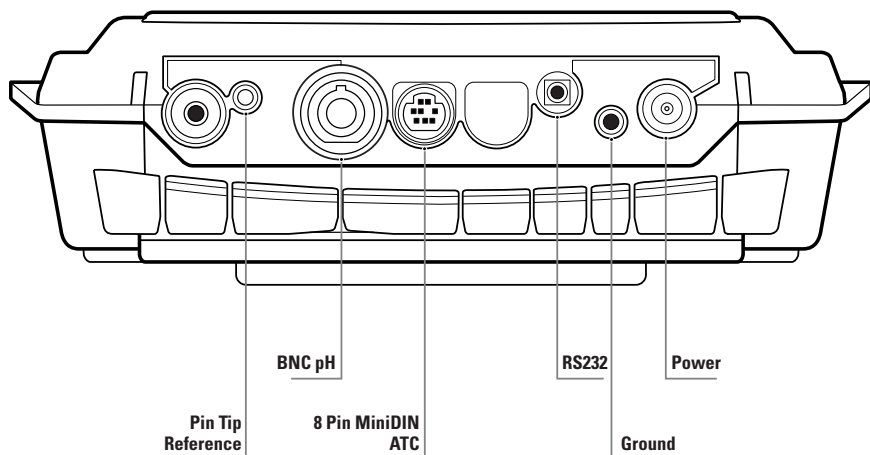
Thermo Scientific Orion 2-Star pH Benchtop Meter

Quick Start Guide

Key Description

	power		up arrow		line select
	calibrate		down arrow		setup
	measure		digits		view log

Meter Connections

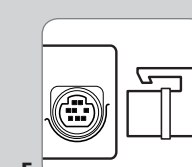
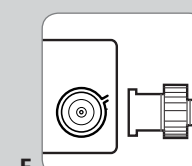
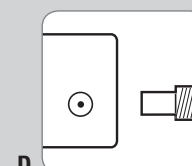
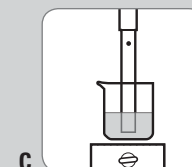
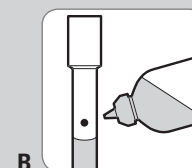
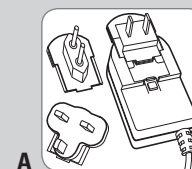


Preparation

1. Power adapter - Select the appropriate wall socket plug and slide the plug plate into the groove on the back of the adapter. **See A.**
2. Prepare the electrode according to the directions in the electrode instruction manual. In general, these steps include:
 - Gently remove the protective cap/sleeve from the sensing element and save for storage.
 - If the electrode is refillable, remove the fill hole cover and fill the electrode with the appropriate fill solution. **See B.**
 - Soak the electrode in pH electrode storage solution (Cat. No. 910001) or ROSS® pH electrode storage solution (Cat. No. 810001). **See C.**
3. Meter connections - Connect the power adapter to the meter and then to the wall socket, **see D.** Connect the pH electrode to the BNC input on the meter, **see E.** Connect the ATC probe to the 8 pin miniDIN input on the meter, **see F.**

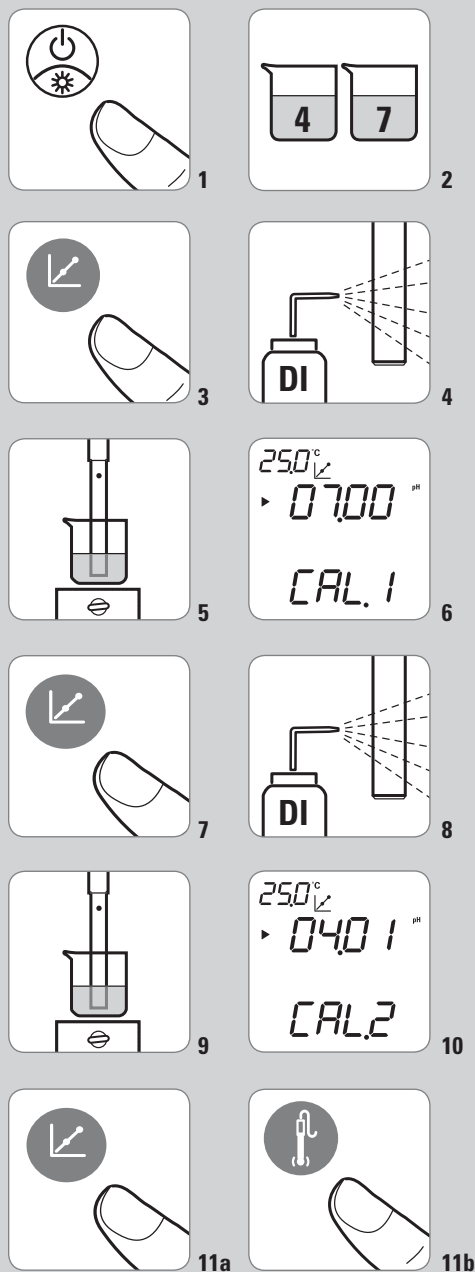
Meter Overview

1. To power on the meter press the **power** key.
2. In the measurement screen press the **up arrow** key to change the value on the top display line to pH, RmV, mV, or a blank line.
3. Press the **line select** key to choose the top, middle, or bottom display line. The ► icon will point to the selected line.
4. To escape out of any meter function, press and hold the **measure** key until the meter returns to the measurement mode.
5. The 2-Star pH meter can be calibrated using up to three pH buffers.



ROSS and the COIL trade dress are trademarks of Thermo Fisher Scientific Inc. US Patent 6,793,787.

For the complete Orion Star™ Series User's Guide visit www.thermo.com/water



pH Autocalibration with Two Buffers

1. Press the **power** key to turn on the meter. **See 1.**
2. Select two buffers that bracket the expected sample pH and are one to four pH units apart. **See 2.** See **Autocalibration Buffer Selection** section.

3. Press the **calibrate** key. **See 3.**

4. Rinse the electrode with deionized water and blot dry with a lint-free tissue. **See 4.**

NOTE: Do not wipe or rub the electrode, as static buildup will occur.

5. Insert the electrode into the first buffer. **See 5.**
6. Wait for the **pH** icon to stop flashing and the **►** icon to start flashing. The meter should display the temperature corrected pH buffer value. **See 6.**

If the displayed buffer value is incorrect or a customer buffer is being used manually enter the value by pressing the **up/down arrow** keys to adjust each digit and the **digits** key to move to the next digit.

7. Press the **calibrate** key. **See 7.**

8. Rinse the electrode with deionized water and blot dry with a lint-free tissue. **See 8.**

NOTE: Do not wipe or rub the electrode, as static buildup will occur.

9. Insert the electrode into the second buffer. **See 9.**
10. Wait for the **pH** icon to stop flashing and the **►** icon to start flashing. The meter should display the temperature corrected pH buffer value. **See 10.**

11. Press the **calibrate** key and then press the **measure** key to save and end the calibration. **See 11a & 11b.** The slope will be displayed and then the meter will proceed to the measurement mode.

Autocalibration Buffer Selection

1. Press the **setup** key.
2. Press the **up arrow** key until PH is displayed on the top line.
3. Press the **line select** key to move the **►** icon to the middle line. Press the **up arrow** key until BUF is displayed.

4. Press the **line select** key to move the **►** icon to the bottom line. Press the **up arrow** key to select the buffer set. USA is default setting.

USA = 1.68, 4.01, 7.00, 10.01, and 12.46
EUR0 = 1.68, 4.01, 6.86, and 9.18

5. Press the **line select** key to move the **►** icon to the top line. Press the **measure** key to return to the measurement mode.

Measurement Mode Selection

1. Press the **setup** key.
2. Press the **up arrow** key until rEAd is displayed on the top line.
3. Press the **line select** key to move the **►** icon to the middle line. Press the **up arrow** key until tYPE is displayed.

4. Press the **line select** key to move the **►** icon to the bottom line. Press the **up arrow** key to select the measurement mode. AUt0 is default setting.

C0nt = Continuous measurement mode
AUt0 = AUTO-READ™ measurement mode
tImE = Timed measurement mode

5. Press the **line select** key to move the **►** icon to the top line. Press the **measure** key to return to the measurement mode.

pH Measurements

1. Rinse the electrode with deionized water, blot dry with a lint-free tissue, and insert the electrode into the sample.
2. If the meter is in AUTO-READ mode, press the **measure** key to take a measurement. Once the reading stabilizes the **AR** icon will stop flashing and the display will freeze. Press the **measure** key again to take a new measurement.
3. If the meter is in the continuous or timed measurement modes, the meter will continuously take measurements and update the display. Once the reading stabilizes the **pH** icon will stop flashing.

Printing Data

In the AUTO-READ and continuous measurement modes, every time the **measure** key is pressed the meter logs the data on the display. In the timed measurement mode, the meter logs the data at the predetermined time interval.

1. Press the **view log** key.
2. Use the **up arrow** key to scroll between CAL0 (print the calibration log) and SEnd (print the measurement log).
3. Press the **line select** key to print the data.